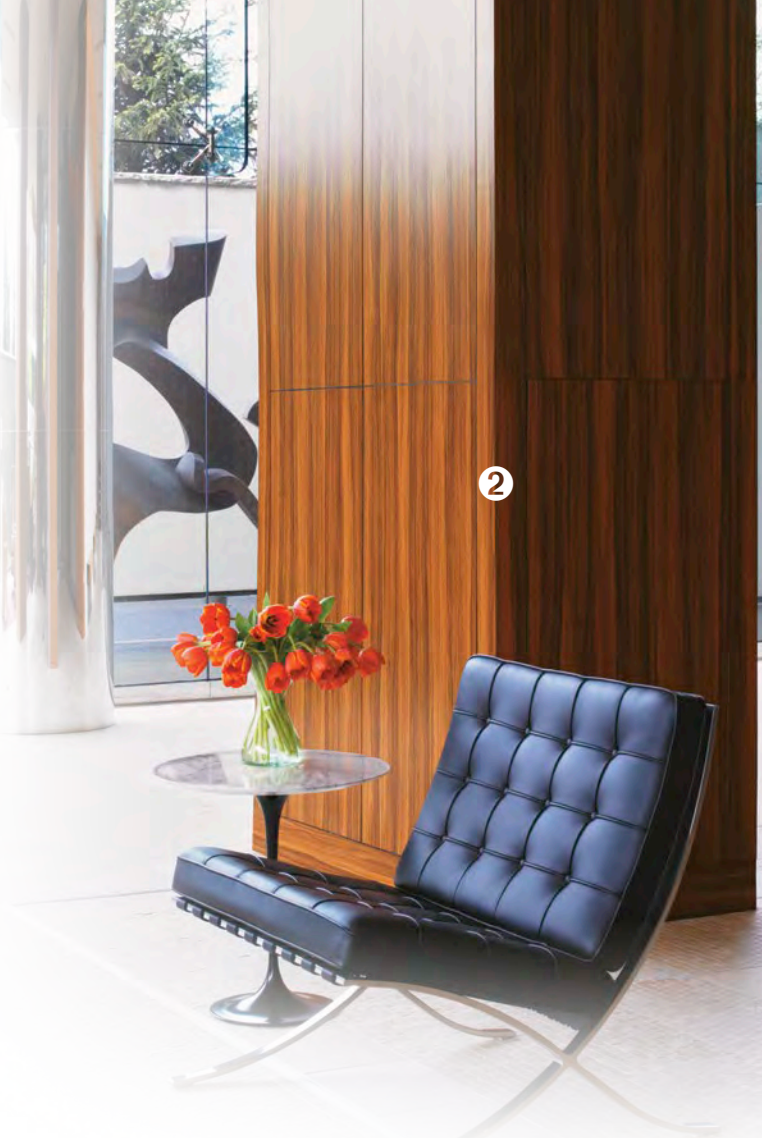


OFFICE FURNITURE

With a long history as users of composite panel products and decorative surfaces, office furniture manufacturers understand the characteristics of panel-processed goods as well as any other specifier. Performance is critical. Quality engineering is a necessity. A product's long service life is the ultimate goal. Specifying panel products with the proper modulus of rupture (MOR) and modulus of elasticity (MOE) is taken seriously. Surface materials must also conform to exacting requirements. Value engineering is a way of life in the office furniture segment.



1 HPL is the perfect material for horizontal work surfaces. The same HPL pattern was used on the 3-inch edge of this conference table for continuity and a bold design statement. 2 This hefty column is clad in durable, aesthetically pleasing HPL in this modern and stylish office setting. 3 Office systems must look good but also be functional and durable. TFL in woodgrain is the right choice in this case.





See pages 36-82 for more detailed product descriptions and performance characteristics.



④ With performance characteristics almost identical to HPL, TFL is often used in horizontal applications as in this elegant desking system. ⑤ This office uses HPL for the horizontal surface of the table as well as for the back wall, providing a warm, attractive and welcoming space for workers and visitors. ⑥ In this innovative work space, a specialty decorative laminate adorns the table and the wall, making it ideal for communication and display. ⑦ The use of CNC machining technology and the ability to laminate in three dimensions make these remarkable PVC-laminated wall panels possible.