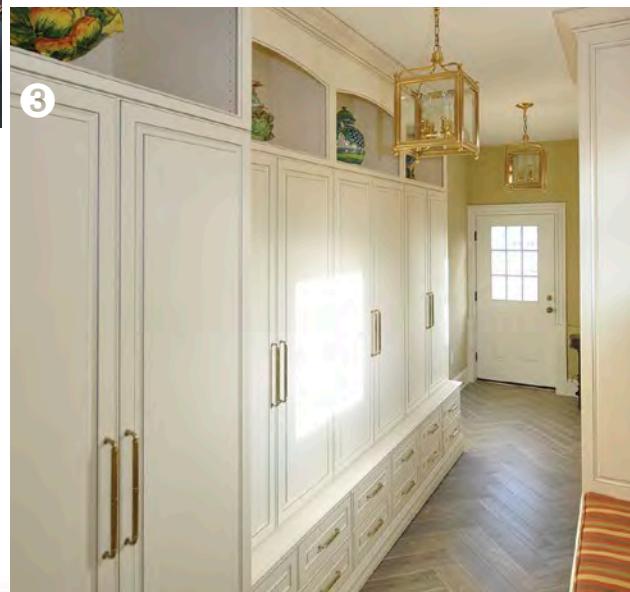
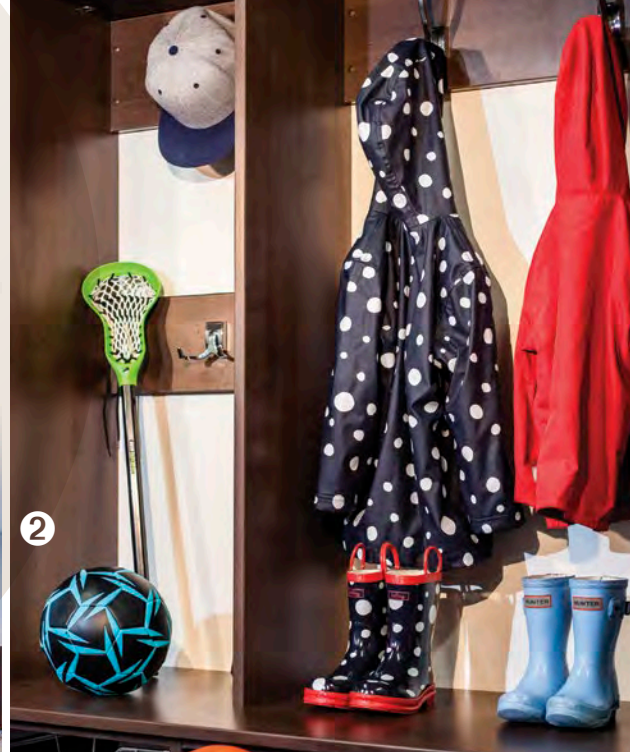


SURFACE & PANEL SPEC

Home organization products are integral to just about every room in the house, but each room and organization system presents its own design and performance challenges. Closets are the least demanding environment as storage for more soft goods-related items. Laundry rooms are more demanding as spaces that contend with cleaners, chemicals and frequent use. Garage cabinetry must withstand considerable abuse in an environment that can be just as demanding as an industrial setting.



1 The cabinets in this garage bring a degree of class to an often-dingy space, but they will take a beating over the years. Textured TFL was used exclusively on the doors and drawer fronts and will do a good job of withstanding the impacts, scratches, chemicals, cleaners and changes in weather that are sure to come. **2** High pressure laminate and three-dimensional laminate are great choices for mudrooms and other high-traffic working spaces. Impact-resistant HPL is especially suitable for horizontal surfaces that are bound to take a beating, while 3DL provides a continuous, wraparound surface that eliminates seams where dirt accumulates. **3** Machined MDF and its smooth finish is increasingly popular as the perfect substrate for solid-color coatings. **4** Home organization units must be durable and functional, optimizing available space, but they also must be attractive when located in bedrooms and other well-decorated areas of the house. This storage unit is made of TFL with doors and drawer fronts made of matching 3DL.



See pages 40-94 for more detailed product descriptions and performance characteristics.